

How to import your e-Cert into browser Internet Explorer

Before you import your certificate into browser, please ensure that:

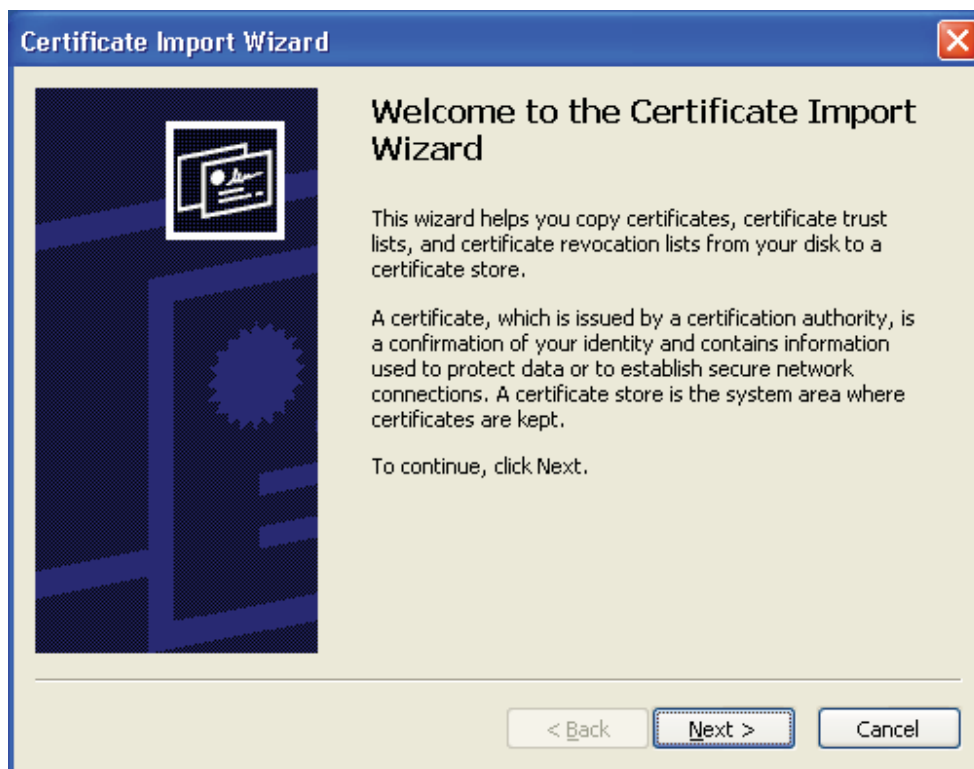
- A. the version of your internet browser is Internet Explorer 5.01 SP1 (or above);
- B. you have received the certificate file (contained in a floppy disk / e-Cert File Card*); and
- C. the PIN Envelope provided by Hongkong Post.

** For e-Cert File Card user, please export the e-Cert to storage medium in prior. To learn how to export the e-Cert from e-Cert File Card, please refer to the following user guide:*

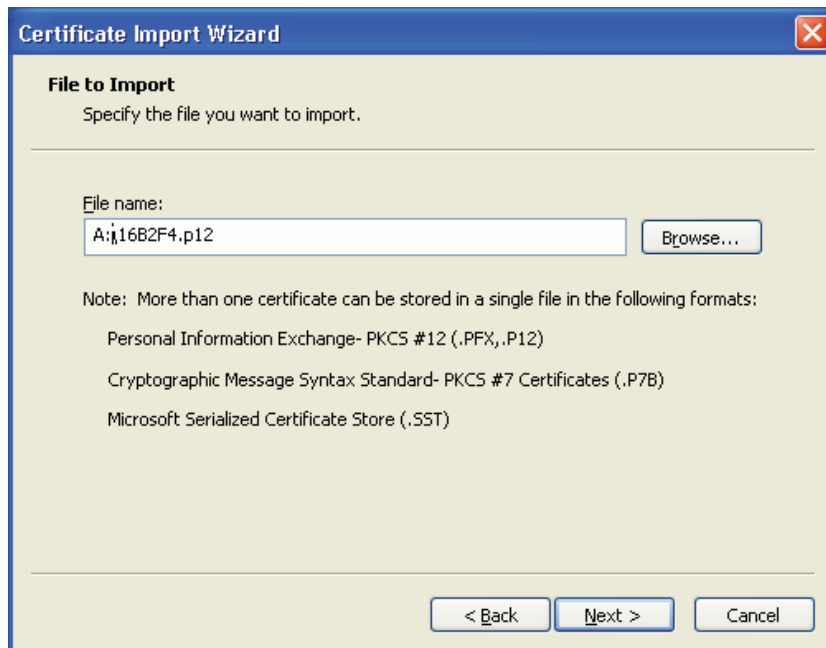
<http://www.hongkongpost.gov.hk/product/ecert/guide/FileCard/img/crtutlguide.pdf>

- 1 Insert e-Cert floppy disk into the Drive, open your certificate file and click “Next >”.

Alternatively, if the e-Cert (with p12 extension) is located on either your hard disk or USB storage device or other storage media, please simply double click the file and then click “Next >” to continue.



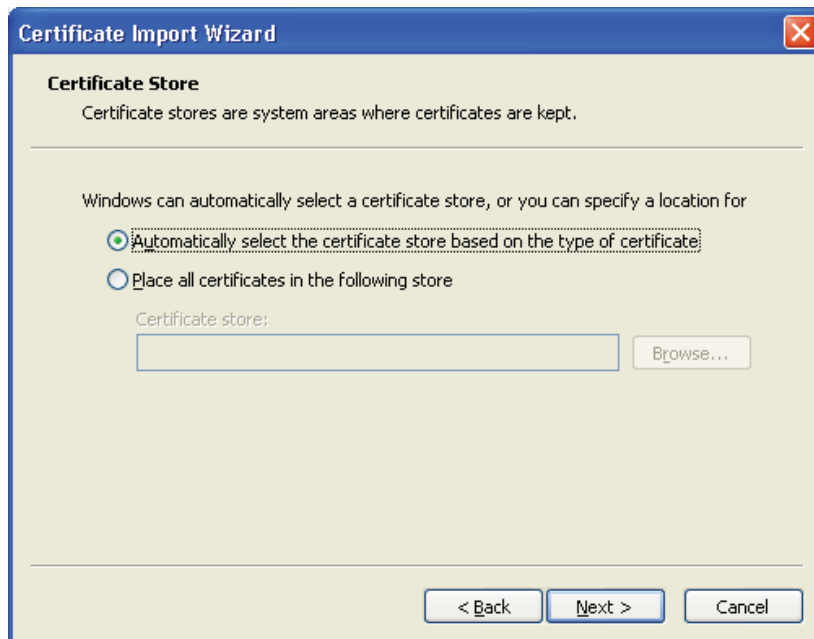
- Your certificate file is shown in the file name field, click “Next >” again to continue.



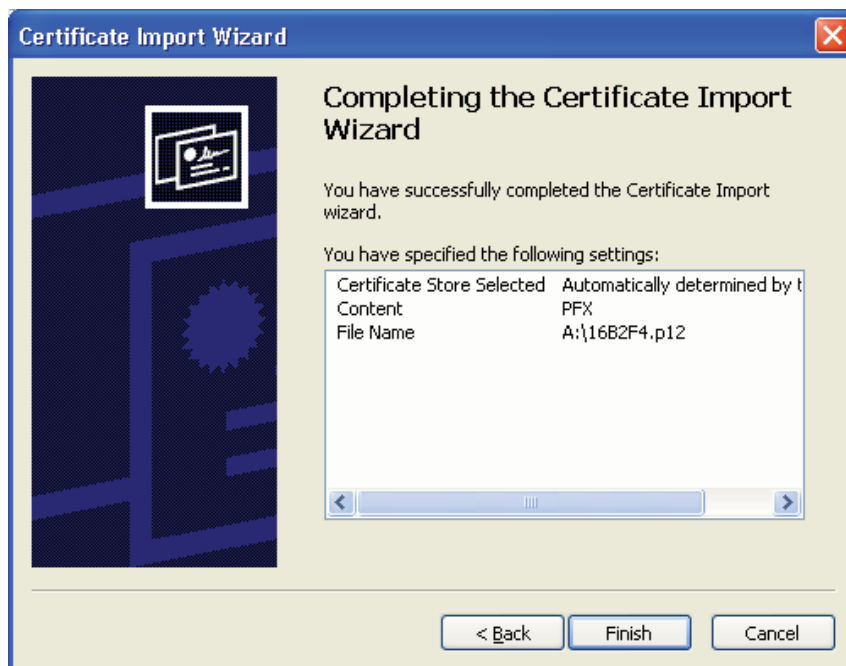
- Key in 16-digit password shown on the PIN Envelope. Check all boxes and click “Next >”.



- 4 Select ‘Automatically select the certificate store based on the type of certificate’, then click “Next”.



- 5 Press “Finish”.



- 6 Click “Set Security Level...” for the security setting of e-Cert.



- 7 Select “High” and click “Next” to continue



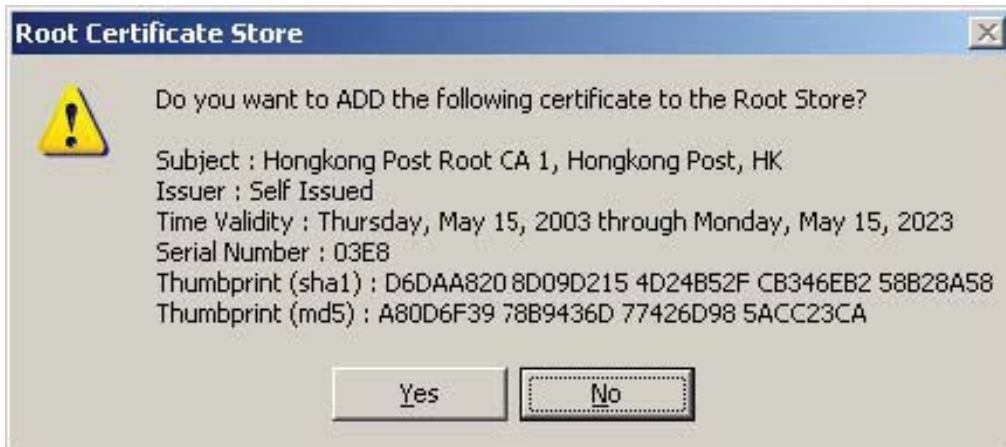
- 8 Create new profile and set your password or select your existing profile, then click “Finish”



- 9 The screen displays “Security level set to High”, then press “OK”.



10 Press “Yes” to add Hongkong Post root certificate.



11 Press “OK” to complete the import process.

