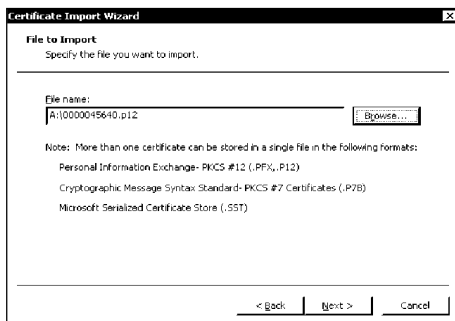


# How to import your e-Cert into browser?

## Internet Explorer

Before you import your certificate into browser, please ensure that:

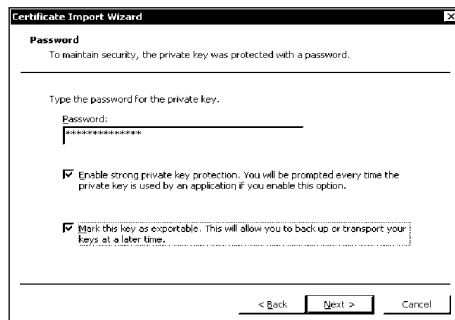
- 1 the version of your internet browser is Internet Explorer 5.01 SP1 (or above) ;
- 2 you have received the certificate file (contained in a floppy disk) and the PIN Envelope.



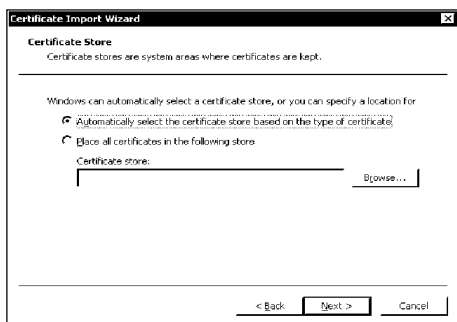
1. Insert e-Cert floppy disk into Drive A, open your certificate file and click **Next >** .

2. Your certificate file is shown here, click **Next >** again to continue.

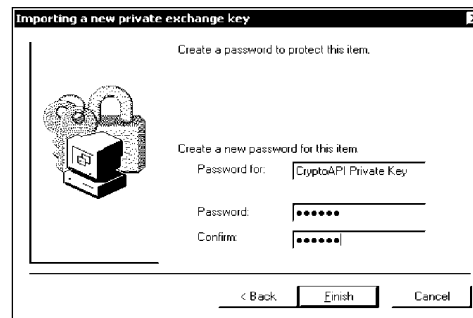
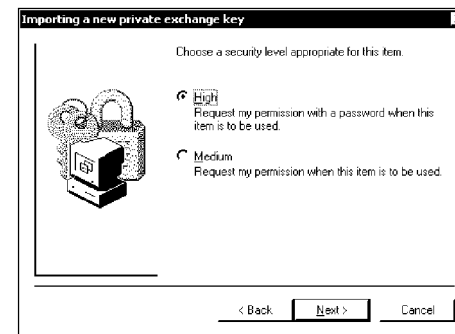
3. Key in 16-digit password shown on the PIN Envelope. Check all boxes and click **Next >** .



4. Select 'Automatically select the certificate store based on the type of certificate', click **Next >** and then **Finish** .



5. Click **Set Security Level...** and set the security level to 'High', and then click **Next >** .



6. Create new profile and set your password or select your existing profile, then click **Finish** .

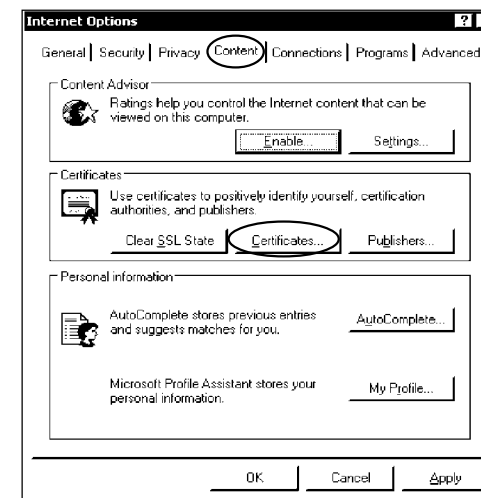
7. Follow the instructions and click **OK** to complete the process.

# How to view your e-Cert?

1. Open Internet Explorer, click 'Tools' and select 'Internet Options'.

2. Select 'Content' tab and then click **Certificates...** .

3. Select your e-Cert in the 'Personal' tab, then click **View** .



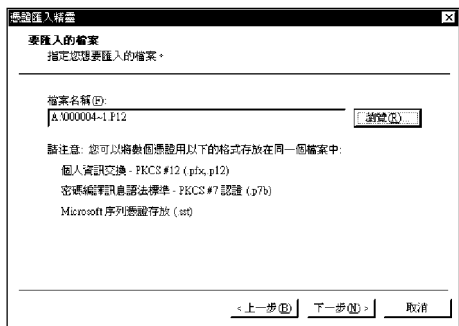
Should you have any questions on importing your certificate, please visit our web site at <http://www.hongkongpost.gov.hk> or contact us on 2921 6633.

# 怎樣將數碼證書匯入瀏覽器？

## Internet Explorer

在你將數碼證書匯入瀏覽器前，請確定：

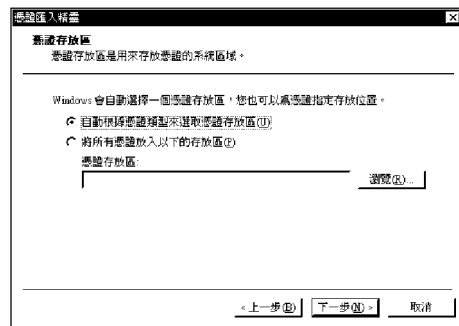
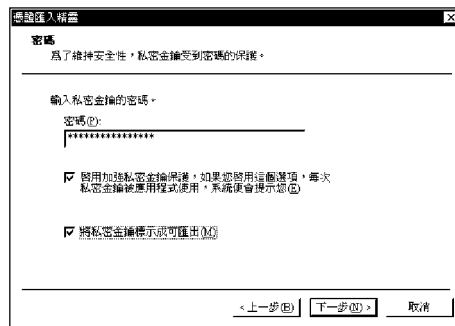
- 1 你的瀏覽器是 Internet Explorer 5.01 SP1 (或以上)；
- 2 你已收到證書檔案(儲存於磁碟片內)和個人密碼封套。



1. 將 e-Cert 磁碟插入“A Drive”然後開啟你的 e-Cert 檔案及按 **下一步(N)>**。

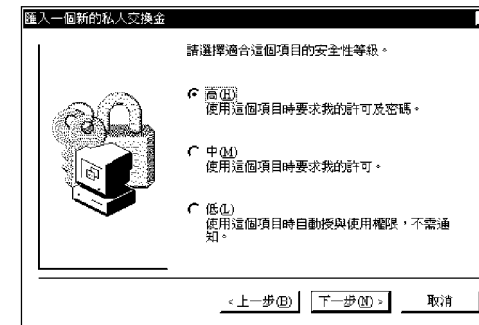
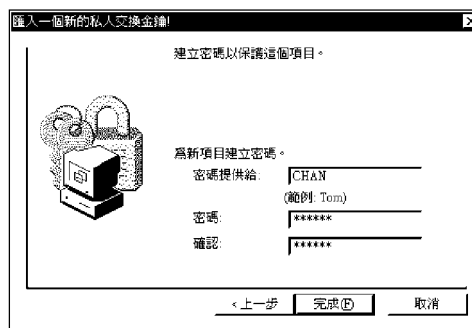
2. 你的 e-Cert 檔案顯示於此，再按 **下一步(N)>** 繼續。

3. 輸入載在個人密碼封套內的16位密碼，並選擇所有選項，然後按 **下一步(N)>**。



4. 選擇「自動根據憑證類型來選取憑證存放區」，然後按 **下一步(N)>** 及 **完成(F)**。

5. 按 **設定安全等級(S)...**，並選擇安全設定為「高」，然後按 **下一步(N)>**。



6. 設立新項目名稱及密碼或選擇已設定的項目名稱，然後按 **完成(F)**。

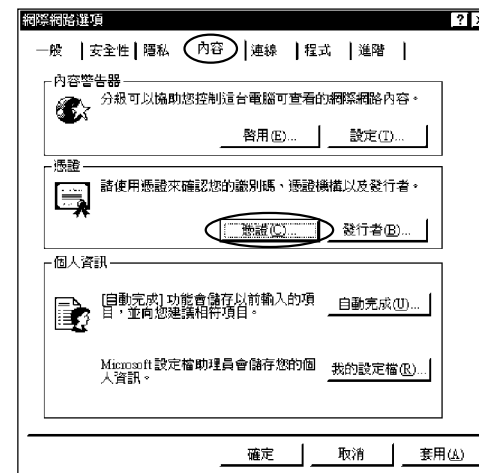
7. 依指示進行匯入證書程序，並按 **完成(F)** 結束。

# 怎樣檢視你的 e-Cert?

1. 啟動Internet Explorer，在目錄欄中選擇「工具」，然後按「Internet 選項」/「網際網路選項」。

2. 選擇「內容」標籤，再按 **憑證(C)...**。

3. 於「個人」標籤內，選取你的 e-Cert，然後按 **檢視(V)...**。



如你對匯入證書的步驟有任何疑問，可瀏覽我們的網址 <http://www.hongkongpost.gov.hk> 或致電 2921 6633 與我們聯絡。

# How to import your e-Cert into the browser?

## Netscape

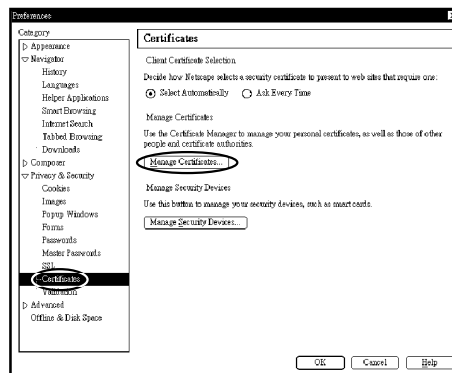
Before you import your certificate into the browser, please ensure that:

- 1 the version of your internet browser is Netscape 4.72 (or above);
- 2 you have received the certificate file (contained in a floppy disk) and the PIN Envelope.

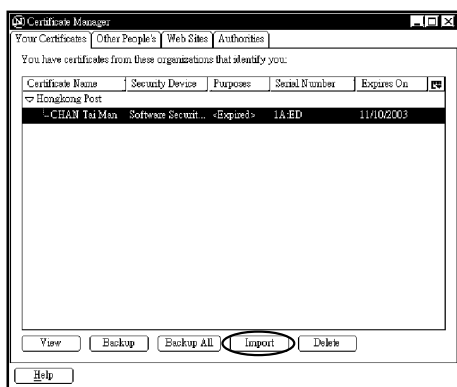


3. Select 'Privacy & Security' and then 'Certificates'.

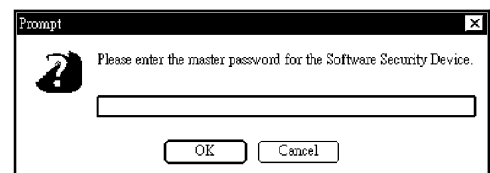
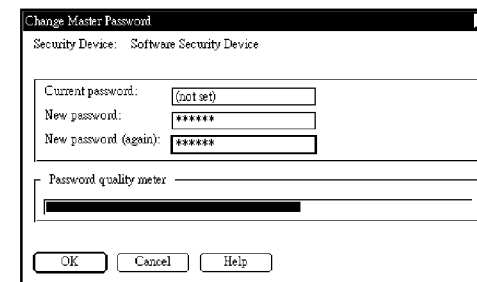
4. Click



5. Click  and insert the floppy disk into Drive A, select your certificate at floppy disk and click



6. If you have not set up 'Master Password', please set a new password to protect your certificate file, then click . (When you complete the setting, please go to step 8).



7. If you have already set up 'Master Password', please type this password and then click .

8. Type the 16-digit password shown on the PIN Envelope and click  to continue.



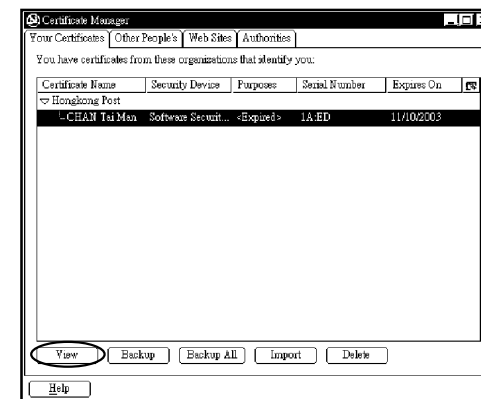
9. Click  again to complete the process.

## How to view your e-Cert?

1. Start Netscape and click 'Edit' and select 'Preferences' from toolbar.

2. Select 'Privacy & Security' and then 'Certificates'.

3. Click . Select your e-Cert and then click .



Should you have any questions on importing your certificate, please visit our web site at <http://www.hongkongpost.gov.hk> or contact us on 2921 6633.

### 更改數碼證書密碼

- ❶ 登入香港郵政網站  
[http://www.hongkongpost.gov.hk/product/download/changepin/index\\_c.html](http://www.hongkongpost.gov.hk/product/download/changepin/index_c.html)
- ❷ 下載及安裝更改數碼證書密碼軟件
- ❸ 依照軟件的指示更改密碼

### 怎樣儲存數碼證書於硬碟機內

- ❶ 將 e-Cert 磁碟插入 "A Drive"，然後於"我的電腦" (My Computer) 開啟 A:
- ❷ 點選 e-Cert 檔案 (檔案結尾為 ".p12")，然後在目錄欄的 "編輯" (Edit) 中選擇 "複製" (Copy)
- ❸ 於"我的電腦" (My Computer) 開啟 C:
- ❹ 在目錄欄的"編輯" (Edit) 中選擇 "貼上" (Paste)，e-Cert 檔案會被複製到 C:
- ❺ 點選 e-Cert 檔案，然後按滑鼠的右鍵
- ❻ 選擇 "更改名稱" (Rename)，然後鍵入檔案名稱，如 "HKJCcert.p12"

### 應用數碼證書的網站

|             |  |
|-------------|--|
| 網上投注服務「投注區」 | <a href="http://www.hongkongjockeyclub.com">www.hongkongjockeyclub.com</a> |
| 生活易         | <a href="http://www.esdlife.com">www.esdlife.com</a>                       |
| 政府物流服務署     | <a href="http://www.ets.com.hk">www.ets.com.hk</a>                         |
| CP1897.com  | <a href="http://www.cp1897.com.hk">www.cp1897.com.hk</a>                   |
| 樂悠網         | <a href="http://www.layoyo.com">www.layoyo.com</a>                         |
| Go2HK       | <a href="http://www.go2hk.com">www.go2hk.com</a>                           |
| HP          | <a href="http://www.hp.com.hk">www.hp.com.hk</a>                           |
| 東亞銀行        | <a href="http://www.hkbea.com">www.hkbea.com</a>                           |
| 大新銀行        | <a href="http://www.dahsing.com">www.dahsing.com</a>                       |
| 大福證券        | <a href="http://www.taifook.com">www.taifook.com</a>                       |
| 環聯資訊有限公司    | <a href="http://www.transunion-hk.com">www.transunion-hk.com</a>           |

### 怎樣下載香港郵政根源證書

你需要香港郵政電子核證核證機關發出的公開根源證書核對電子證書。你可以到以下網站下載兩張公開根源證書。

香港郵政核證機關根源證書1 (智能身份證電子證書)  
[http://www.hongkongpost.gov.hk/product/download/root/index\\_c.html](http://www.hongkongpost.gov.hk/product/download/root/index_c.html)

香港郵政核證機關根源證書  
[http://www.hongkongpost.gov.hk/product/download/root/index\\_c.html](http://www.hongkongpost.gov.hk/product/download/root/index_c.html)

### Change Password Programme

- ❶ Logon to <http://www.hongkongpost.gov.hk/product/download/changepin/index.html>
- ❷ Download the software
- ❸ Follow the instructions for change of password

### How to Save Your e-Cert in the Hard Disk

- ❶ Insert e-Cert floppy disk into 1.44MB floppy drive, then open A: in "My Computer".
- ❷ Select e-Cert file (with suffix as ".p12"). Then in "Edit", select "Copy"
- ❸ In "My Computer", open C:
- ❹ In "Edit", select "Paste". e-Cert will be copied to C:
- ❺ Select e-Cert file, then right-click the mouse
- ❻ Input the file name, e.g. "HKJCcert.pfx"

### e-Cert Applications

|                                     |  |
|-------------------------------------|--|
| eWin                                | <a href="http://www.hongkongjockeyclub.com">www.hongkongjockeyclub.com</a> |
| ESD Services Limited                | <a href="http://www.esdlife.com">www.esdlife.com</a>                       |
| Government Logistics Department     | <a href="http://www.ets.com.hk">www.ets.com.hk</a>                         |
| CP1897.com                          | <a href="http://www.cp1897.com.hk">www.cp1897.com.hk</a>                   |
| La Yo Yo                            | <a href="http://www.layoyo.com">www.layoyo.com</a>                         |
| Go2HK                               | <a href="http://www.go2hk.com">www.go2hk.com</a>                           |
| Hewlett-Packard                     | <a href="http://www.hp.com.hk">www.hp.com.hk</a>                           |
| The Bank of East Asia, Limited      | <a href="http://www.hkbea.com">www.hkbea.com</a>                           |
| Dah Sing Bank Limited               | <a href="http://www.dahsing.com">www.dahsing.com</a>                       |
| Tai Fook Securities Co Ltd          | <a href="http://www.taifook.com">www.taifook.com</a>                       |
| TransUnion Information Services Ltd | <a href="http://www.transunion-hk.com">www.transunion-hk.com</a>           |

### How to download the Hongkong Post Root Certificate

There are two Root Certificates issued by Hongkong Post CA and you need these two Root Certificates to validate certificates issued by Hongkong Post CA. They are available for download at :

**Hongkong Post Root CA 1 Certificate (e-Cert for Smart ID Card)**  
<http://www.hongkongpost.gov.hk/product/download/root/index.html>

**Hongkong Post Root CA Certificate**  
<http://www.hongkongpost.gov.hk/product/download/root/index.html>